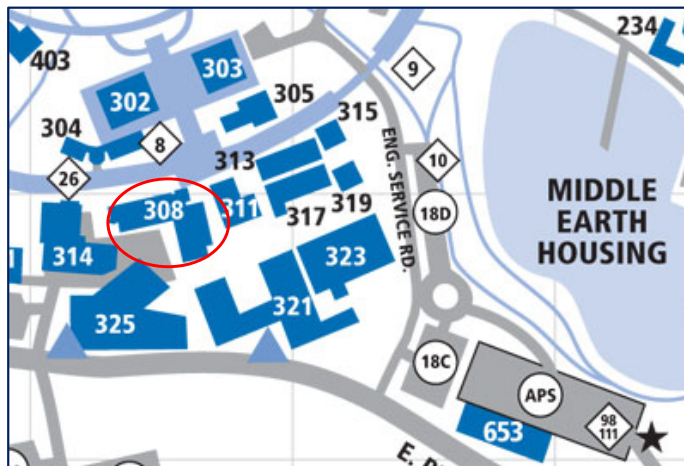




Dr. Athina Markopoulou
Associate Dean



**5400 Engineering Hall
(building #308)**

<http://www.eng.uci.edu/current/graduate>
gradengr@uci.edu

**Monday-Friday
9am-12pm; 1pm-4pm**



Enmanuel Gallardo
Admin Manager



Jean Macneil
Director

jean.macneil@uci.edu

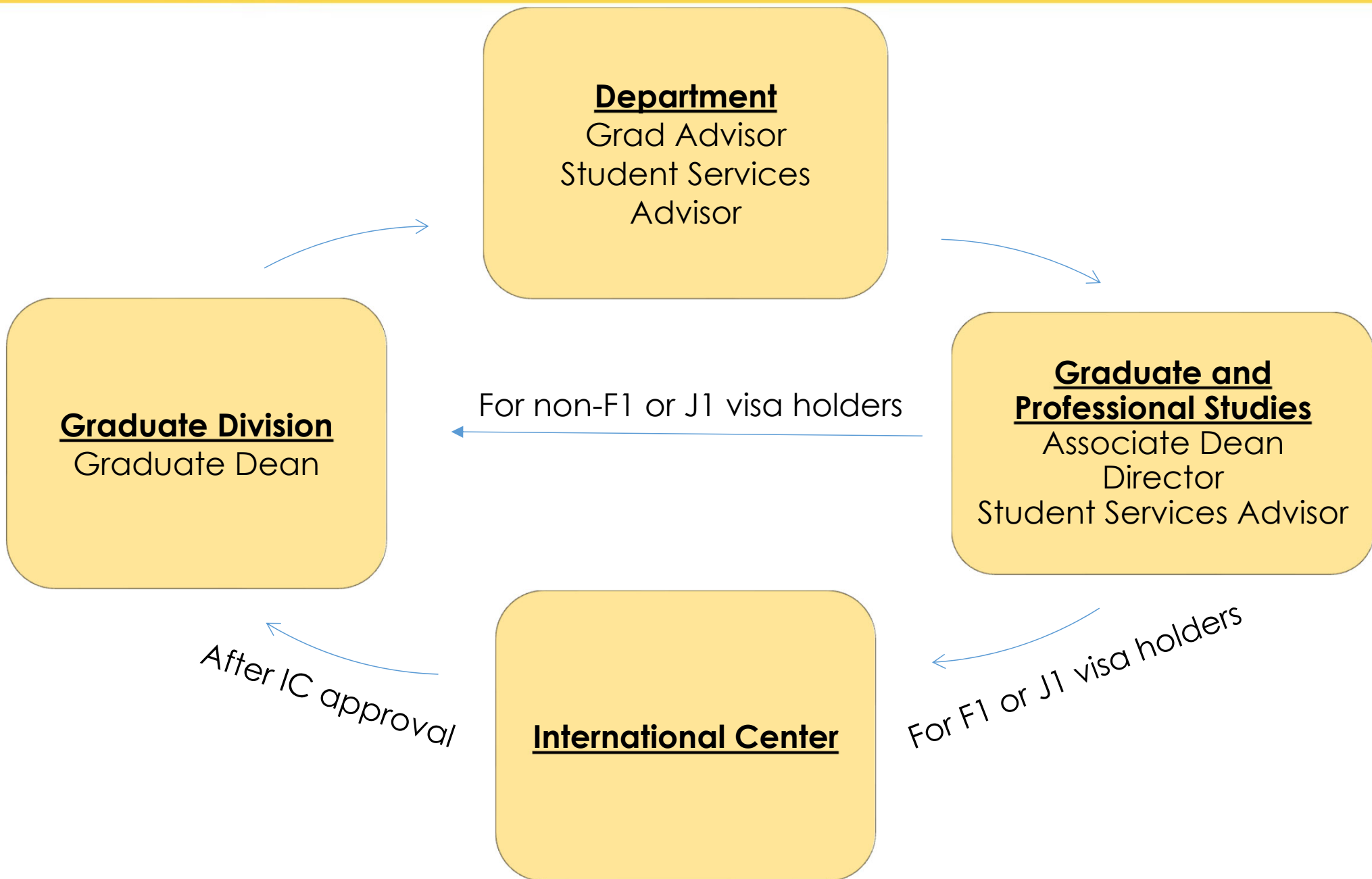
**Primarily works with
M.Eng and Computational
Science JDP**



Katarina Barron
Student Services Advisor
katarina.barron@uci.edu
**Primarily works with all MS
and PhD students**



Graduate Related Offices





Full-time

- 12 units minimum
- 16 units maximum
- 17+ units – need to email GPS staff for approval
- Required every quarter until graduation

Part-time

- 1 units minimum
- 8 units maximum
- For domestic MS students only
- For international MS students in their last quarter only
- Requires online petition via StudentAccess and approval by certain deadline

ABSOLUTE REGISTRATION DEADLINE: Friday of Week 3 @ 4:00pm

ADD/DROP/UNIT CHANGE DEADLINE: Friday of Week 2 @ 5:00pm

Missed Deadline?

Submit electronic [Enrollment Exception](#) through StudentAccess

No guarantee that request will be approved



Satisfactory Progress

All Students:

- 3.0 GPA or higher
- Passing courses = B or higher or Satisfactory (S)
 - P/NP courses = not acceptable toward degree
 - Academic Conditional Status = lower than 3.0 GPA OR 2 Consecutive Term GPAs lower than 3.0



PhD Students:

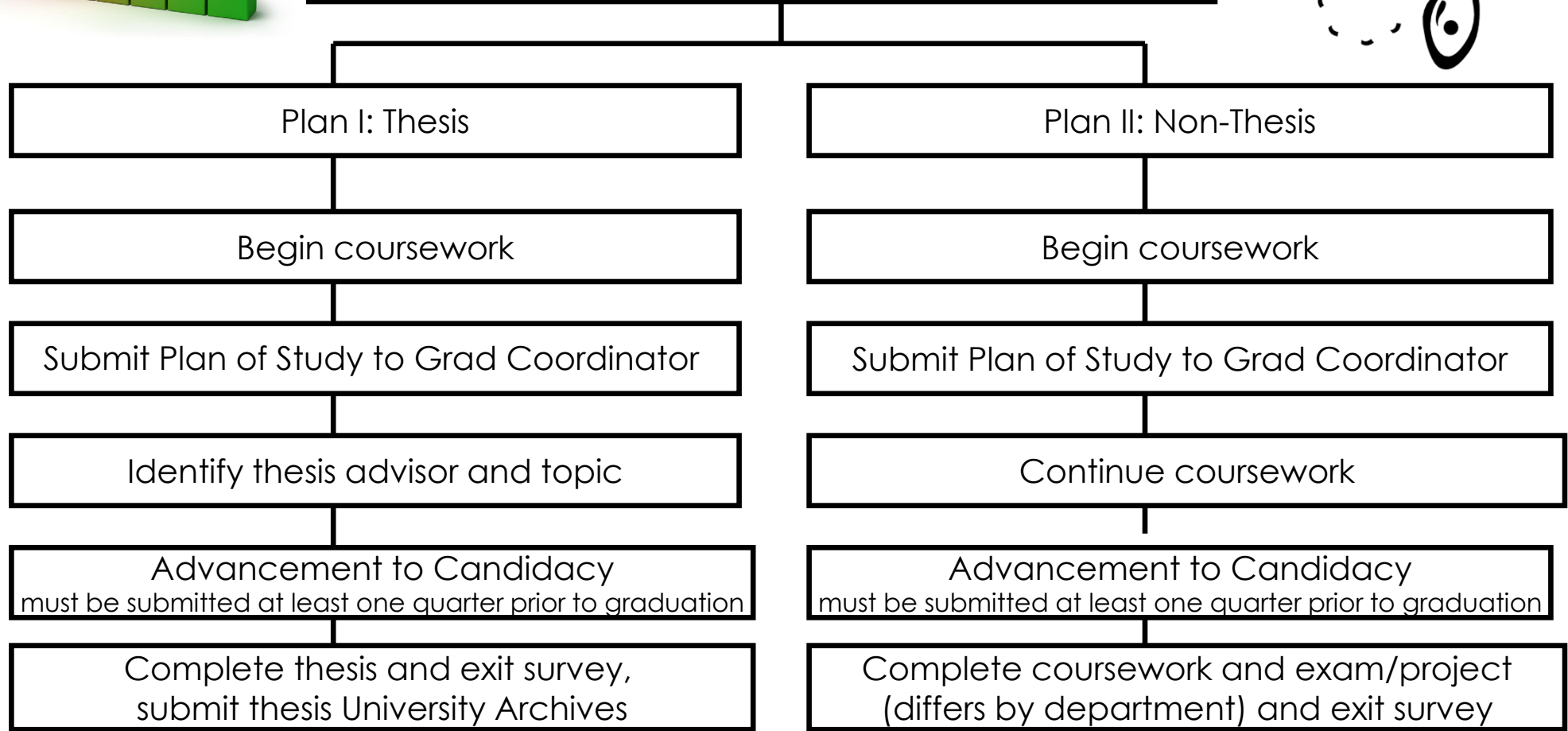
- Match with PhD advisor by end of 1st year (School policy) and maintain an advisor at all times – some programs have earlier matching deadline
- Stay within normative time (see catalogue for specific timelines)



Steps to a M.S. Degree

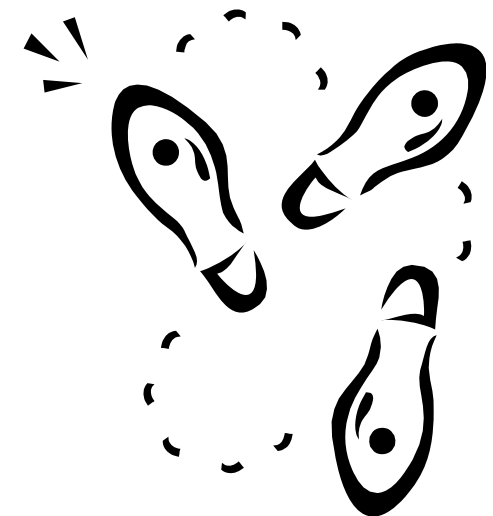
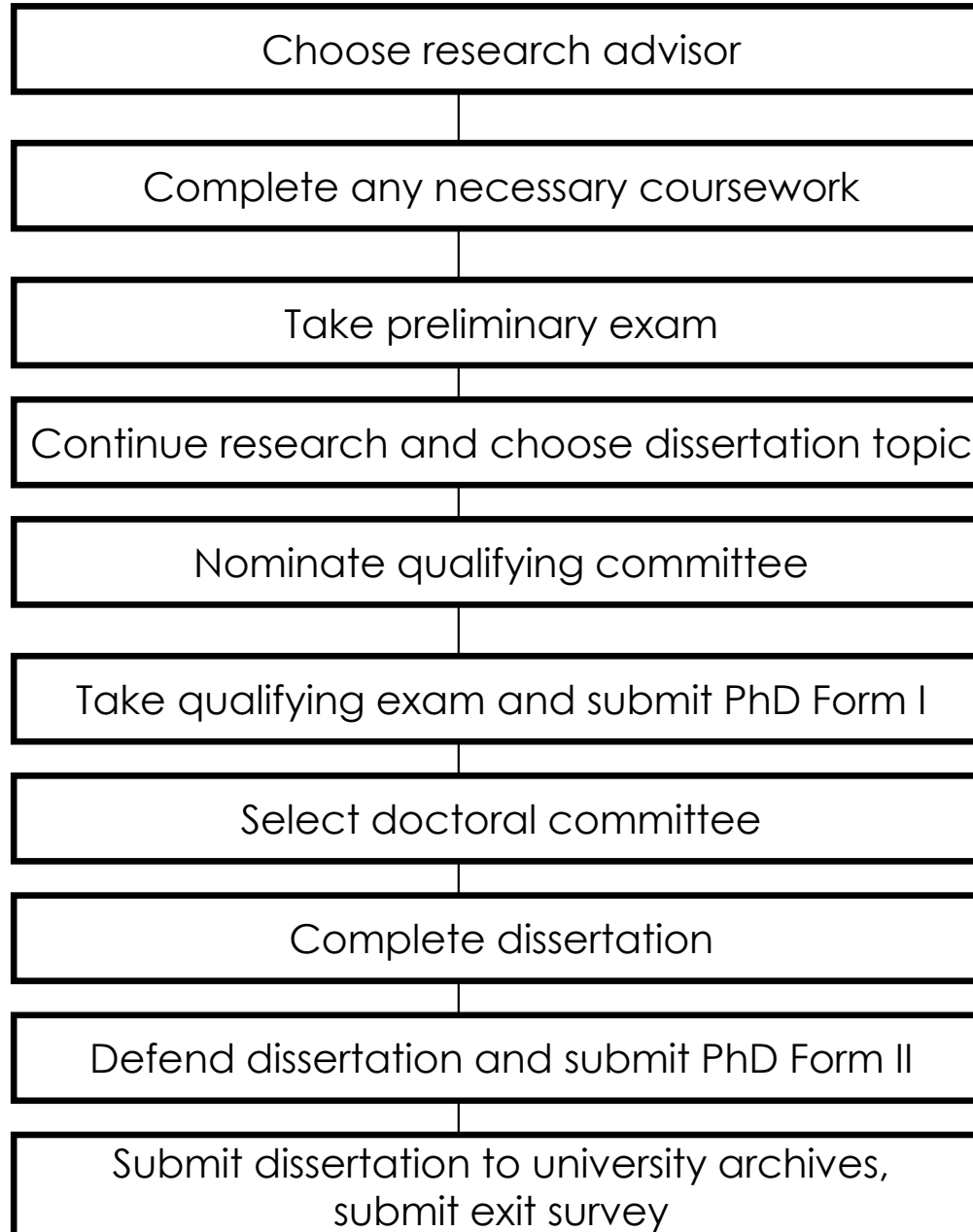


CHOOSE OPTION
Plan I: Thesis
Plan II: Non-Thesis





Steps to a Ph.D. Degree





- You can find a list of course descriptions as well as your requirements in the [2023-24 UCI General Catalogue](#).
- You can find the policies and procedures to guide you through your graduate study in the [Engineering Graduate Student Handbook](#).
- Also refer to your departmental handbook for additional/specific requirements.
- Additional information can be found in the [Graduate Enrolled Form policies](#).





Contact Graduate and Professional Studies

- *"I need the Associate Dean's signature"* – this request is most likely for a DocuSign form. If so, the form will be routed to our office so we can get the signature for you
- *"My graduate coordinator is on vacation and I need academic advising help"* – we can provide assistance with academic advising
- *"What do I need to do for.... (advancing to candidacy, taking my qualifying exam, defending my dissertation, etc.)"* – we send important information to you when appropriate
- *"I am going on CPT"* - we can provide you with authorization to enroll in the necessary course and obtain required signature
- *"I have concerns about my research lab/research advisor"* - we are here to listen and counsel you on how to proceed depending on the situation



Campus Resources

UCI Samueli
School of Engineering



[Division of Career Pathways](#)



**COUNSELING
CENTER**

University of California, Irvine

[Counseling Center](#)



[Graduate Division](#)



[Graduate & Postdoctoral Scholar Resource Center](#)



UCI International Center

[International Center](#)



[Libraries](#)





Connect With Us!

UCI Samueli
School of Engineering

